

Track Watch

NOVEMBER 2024

Lest We Forget



 306097 192 St W, MILLARVILLE, AB T0L 1K0

 OFFICE@MRAS-TRACK.COM

 (403) 931-3411

 WWW.MILLARVILLERACETRACK.COM

OFFICE HOURS

TUESDAY - FRIDAY 9:00AM - 3:00PM

OUR VISION

MILLARVILLE RACING AND AGRICULTURAL SOCIETY IS DEDICATED TO BUILDING COMMUNITY SPIRIT.

OUR MISSION

MILLARVILLE RACING AND AGRICULTURAL SOCIETY PROVIDES AUTHENTIC FAMILY EXPERIENCES AND EXCEPTIONAL FACILITIES WHICH CELEBRATE OUR AGRICULTURAL HERITAGE, INSPIRING A SENSE OF BELONGING FOR THE COMMUNITY.



Track Watch

TABLE OF CONTENTS

4

DIRECTOR'S MESSAGE

This month's message is from Sylvia Checkley, MRAS Director

6

BOARD MEMBER CANDIDATES

10

HISTORY OF THE POPPY

11

IN FLANDERS FIELDS

12

EQUINE FACILITIES

13

EQUINE ACTIVITIES

17

MILLARVILLE HISTORICAL SOCIETY

20

PRIDDIS MILLARVILLE FAIR

22

HALLOWEEN HOWL SUMMARY

25

CHRISTMAS MARKET VOLUNTEERS NEEDED

26

KIDS ONLY SHOPPE NEWS

11TH Edition Newsletter

27

MILLARVILLE HORTICULTURAL CLUB

28

MILLARVILLE COMMUNITY LIBRARY

30

BUY & SELL MARKETPLACE



2024 MRAS BOARD OF DIRECTORS

Brent Foster
President

Barb Parker
Vice President

Andrea Neumann
Secretary

Gord Cherry
Treasurer

Sylvia Checkley
Director

Colina Clark
Director

Chit Lutchman
Director

Mark MacDonald
Director

Roy Mathis
Director

Director's Message



Sylvia Checkley
MRAS Director

Greetings from the Track,

I felt very thankful this past month - October was a lovely surprise with beautiful weather giving us time to enjoy the fall leaves. The last Saturday Farmers Market took place on Thanksgiving weekend. We also had a great group out at the arena with their horses for an obstacle practice. MRAS is now busy getting ready for the Christmas Market, our biggest event of the year, where we are proud to welcome people from all over to our community. Many thanks to the many volunteers that help before, during and after the market to make it the success it has been in the past! The Market runs for two weekends: November 7 to 10th and November 14th -17th. Members get in free, make sure you get your free tickets online ASAP.

The Kids Only Shoppe and Mrs. Claus have been favourites at the Christmas Market over the last decade. The KOS offers a place for children aged 5-12 to pick out and buy gifts (under \$15) for people on their shopping list, with the help of a Christmas elf. No parents allowed! (The parent fills out a form with information on the gifts needed and the cost). Money raised at the KOS is donated to lunch programs at local schools. The KOS was honoured to be recognized by the Alberta School Boards Association, in partnership with the Foothills School Division, with the Friends of Education Award! Congratulations again to this dedicated group of volunteers!

The equine committee has been busy researching new footing for our indoor riding arena. This committee is diligent, with a desire to make an informed decision about this important choice. They have conducted surveys of our membership, attended a workshop and met with numerous experts in the field. The goal of the committee is to choose a multipurpose footing, appropriate for multiple disciplines. This will be a two step process. First, the current footing will be reworked, leveled and sand will be added after the Christmas Market. We will then work with contractors to gain information about grooming and humidity in the arena - this will help inform our change to sand in the future.

Lifeblood is defined by Cambridge Dictionary as 'the thing that is most important to the continuing success and existence of something else'. Volunteers are the lifeblood of the activities, events and day to day operations of MRAS! I am so thankful for all of our existing volunteers! If you want to be part of our volunteer community, I encourage you to get involved. You can sign up to volunteer on our website, by calling the office, or by talking to one of our existing volunteers including Committee and Board members.

On that note, I will remind you that the MRAS Annual General Meeting is coming soon on December 2nd. I hope to see you there!

Sylvia Checkley

WE ARE LOOKING FOR BOARD MEMBERS!

Join our Board of Directors to help make a difference in the community!



Elections held at our AGM on December 2, 2024.
Please contact the MRAS president for more info:
mraspresident@gmail.com

MEET OUR 2025 BOARD MEMBER CANDIDATES



Natasha Phillipson

Community service and involvement have been a part of my life for over 30 years. As a married mom of 4 adult children, and a retired nurse, I have found next to my family, dynamic & diverse volunteer work is what fills my heart and soul. Living in a healthy active community is important and I feel strongly about participating & being engaged with the people and place we live and love.

The Millarville Racing & Agricultural Society seems to be a wonderful balance of serving my community and participating in rewarding events, while also being a part of the legacy of bringing people together for over 100 years.... and now moving into the next 100.

I am putting my name forward to be a board member for the MRAS with an extensive background in healthcare & volunteer work. Experience & a sample of relevant qualifications are advisory board positions at university level and president of the college of nursing, a diverse health and wellness career both acute care and in education, non profit boards, proposal writing, manager of many sports programs and past medical director for the World Jr. hockey tournament. Other more current volunteer work ranges from weekly local AHS hospital volunteer, hospice support volunteer, homeless shelter support, school support and brown bag lunch kids program, palliative care training facilitator, and MRAS Fair committee member.

Aside from volunteer work, I enjoy camping, cycling, snowshoeing, planning adventures & traveling, hiking/walking our dogs, spending time in nature, music appreciation, cooking, and any time spent with family & friends.

Thank you for the consideration for the MRAS board position and I look forward to serving my rural community now and in years to come.

Natasha Phillipson



Suzanne Sills

A regular visitor to the Millarville Racetrack for decades, I began actively volunteering at MRAS after moving to the Millarville area in 2011. The strong ties of community, many friendships and rewarding experiences are the reasons I remain an active volunteer.

Skills in project management, financial stewardship, data analysis and leadership developed through a lengthy engineering career in the oil & gas industry have come in handy in my endeavours since retirement. I chaired the Fair Committee for 9 years and am moving into the position of Volunteer Coordinator for the Fair. I am a founding member of the Kids Only Shoppe committee and remain a key organizer for that group. Other groups that I've been involved with include the Farmers' Market Committee, Financial Stability, Arena Rebuild, Half Marathon and Races.

I enjoy gardening, camping and spending time with family.

Suzanne Sills



Kerry Dark

Kerry Dark is an accomplished Process Safety Engineer with over 16 years of experience in the upstream oil and gas sector, specializing in asset integrity and process safety management. Skilled in developing and maintaining technical safety and integrity programs, Kerry has a proven record of enhancing the safety and reliability of operational assets through rigorous monitoring, risk assessment, and regulatory compliance. Through proactive risk assessment, Kerry consistently identifies and mitigates potential high-impact operational and reputational risks, contributing to a safer organizational environment. In his role at ARC Resources Ltd., he is pivotal in advancing organizational safety through data-driven risk assessments, root cause analyses, and Management of Change reviews. A certified Professional Engineer in Alberta and British Columbia, with a Bachelor of Applied Science in Materials Engineering from Dalhousie University, Kerry also holds international certifications in pressure vessel and storage tank inspection.

Kerry holds influential roles in industry committees, serving as Vice Chair of the CSA Z260 Pipeline System Safety Metrics Code Technical Committee and as a member of the CAPP Pipeline Technical Committee. Through these roles, Kerry contributes to establishing and refining safety standards crucial to pipeline integrity and environmental stewardship across Canada, helping to set benchmarks for operational safety and sustainability in the oil and gas sector.

Outside his professional life, Kerry enjoys outdoor activities like hiking and skiing with his two young boys, aged 6 and 4, and his wife. Kerry is committed to honoring and preserving heritage while adapting it for future relevance. He believes in blending tradition with innovation

MILLARVILLE RACING & AGRICULTURAL SOCIETY

NOTICE OF ANNUAL GENERAL MEETING

Monday, December 2nd, 2024, at 6:30 pm at the MRAS Hall
306097 192nd St West, Millarville:



Memberships for the 2024/25 year are available to purchase at the AGM. Current membership is required to vote. We encourage you to purchase your membership in advance of attending the AGM to reduce the backlog at the door.

Purchase your membership online at:

<https://mras.getcommunal.com/memberships>

Items for discussion include:

Fiscal year end review and election of Directors.

For more details, please email us at office@mras-track.com or call 403-931-3411

ATTENTION

MEMBERS!

We would greatly appreciate your assistance in organizing and managing this year's AGM.

Please contact Dan Heyde for more info and to sign up: ops@mras-track.com

2024 MRAS STAFF

Dan Heyde
Operations Manager

Melonie McKee
Farmers' Market & Events Manager

Craig Howe
Maintenance Manager

Tylene Hay
Office Administration

Shannon Breeze
Bookkeeper

Val Evenson
Janitorial/Cleaning

Lance Piltingsrud
Maintenance

Jessie Blatz
Maintenance

Dawsyn McKee
Maintenance



MILLARVILLE *run* TO THE FARMERS' MARKET

We are looking for a Lead or Co-Leads for the 2025 *Millarville Run to the Farmers' Market* Half Marathon!

- Organize and lead the committee/event for a great cause
- Support the local community
- Work with many passionate, energetic volunteers

For more info, please contact Andrea: mr.as.secretary@gmail.com



NEW

Need a space for your Christmas party?

Planning a wedding?

Organizing a Family reunion?

We have rental facilities available to accommodate any event!

For more info and to book your event Click [HERE](#) or go to:
<https://www.millarvilleracetrack.com/our-facilities/#rentals>

The History of the Poppy

Napoleonic Wars

The significance of the Poppy can be traced back to the Napoleonic Wars in the 19th century, over 110 years before being adopted in Canada.

Records from that time indicate that thick Poppies grew over the graves of soldiers in Flanders, France. Fields that had been barren before battle exploded with the blood-red flowers after the fighting ended.



1921

The idea for the Remembrance Poppy was imagined by Madame Anna Guérin of France. She was inspired by John McCrae's poem "In Flanders Fields." Anna had originally founded a charity to help rebuild regions of France after the First World War, and created poppies made of fabric to raise funds. Later, Anna presented her concept to France's allies, including the precursor to The Royal Canadian Legion, The Great War Veterans Association. The idea was considered at a meeting in Port Arthur, Ontario (now Thunder Bay) and was adopted on July 6, 1921.

First World War

The person who first introduced the Poppy to Canada and the Commonwealth was Lieutenant-Colonel John McCrae of Guelph, Ontario, a Canadian Medical Officer during the First World War. John McCrae penned the Poem "In Flanders Fields" on a scrap of paper in May 1915 on the day following the death of a fellow soldier. Little did he know then that those 13 lines would become enshrined in the hearts and minds of all who would wear them.

McCrae's poem was published in Punch Magazine in December of that same year.


Today

The Poppy is worn each year during the Remembrance period to honour Canada's Fallen. The Legion also encourages the wearing of a Poppy for the funeral of a Veteran and for any commemorative event honouring Fallen Veterans. Thanks to the millions of Canadians who wear the Legion's lapel Poppy each November, the little red flower has never died, and the memories of those who fell in battle remain strong.

For more info on Remembrance Day and the Legion click:



In Flanders' fields



By Lt. Col. John Mc Crae
(of Guelph, Canada.)
Died January 26th, 1918, while on
active service in France.

In Flanders' fields the poppies blow
Between the crosses, row on row,
That mark our place, and in the sky
The larks still bravely singing fly,
Scarce heard amidst the guns below.
We are the dead. Short days ago
We lived, felt dawn, saw sunset glow,
Loved and were loved, and now we lie
In Flanders' fields.

Take up our quarrel with the foe,
To you from falling hands we throw
The Torch—be yours to hold it high;
If ye break faith with us who die,
We shall not sleep though poppies grow
In Flanders' fields.



MRAS EQUINE FACILITIES

Questions about the MRAS Equine Facilities email: grounds@mras-track.com.

For memberships email: office@mras-track.com

Hello Equine Members,

The MRAS riding rules, and sign-up sheet have been developed to help our members have a safe and enjoyable time riding while also maintaining our building in good condition.

Riding Rules: These have been created and agreed upon to ensure everyone using the facility remains safe and that our facility can be kept in great condition. Please continue to follow the rules and encourage your fellow riders to follow the rules. Click [HERE](#) for the rules or go to: <https://www.millarvilleracetrack.com/equine/>.

Booking Sheet: Please use the booking sheet when you plan to ride and honor your time. This practice is in place to ensure fair usage of the facility and helps the maintenance team plan when they can be in the arena for maintenance.

Manure: Please continue to clean up after your horses. We know the vast majority of you are excellent at this, but it continues to be a problem.

****NEW PROCESS****

Remove your horse's manure from the arena using the forks and pails and transport it to the blue bins. Pails should not be used for storage of manure; it belongs in the blue bins.

Help us take pride in our arena and its use by following the rules that we have in place,

Thank you!

UPCOMING EQUINE ACTIVITIES:

The volunteer members of the MRAS Equine Committee are working hard to bring a variety of clinics and activities to the MRAS riding membership and equine community. Please check the website regularly to see what is available at: www.millarvilleraetrack.com, Equine tab under Upcoming Events.

WINTER RIDING LESSON SERIES KIDS & ADULTS

With Danielle Bartlett

Dates: FRIDAYS: November 22, December 6 & 20

Kids Lesson Times: 4:30 & 5:30 pm

Adult Lesson Time: 6:30pm

Group size maximum 4 riders for one hour.

Danielle is back for another three lessons. She has an excellent ability to communicate with youth and adults of all ages from learning to ride youngsters to those that are refining their skills. Minimum age is 5 years and child must be riding completely independently and unassisted. Horse needs to be well mannered in a group of horses.

To register or for more information please contact lynnbrunton@gmail.com. Once you are registered payment instructions will be sent. Payment then confirms the spot. Please specify the age of the child and their level or riding experience.

Cost: MRAS Riding Members \$60 per lesson or \$175.00 for all three (must prepay for all)

Priority registration until Oct 21,2024

Non-Riding Members \$69 per lesson or \$202.00 for all five (must prepay for all)

FALL DRESSAGE LESSONS SERIES

with Kimberly Cox

Wednesdays evenings: November 27, December 4 & 11

OR

Thursday mornings: November 28, December 5 & 12

English and Western Riders Welcome!

Work on the fundamentals of Dressage:

- Fine tuning of aids
- Rhythm, balance through suppleness
- Connection and softness through transitions

Participants will be divided into groups base on their riding ability and training needs. Pre-registration required. Must choose evening OR morning classes NO combination of dates. If interested in both dates, you must pay two registrations fees.

Cost: MRAS Current Riding Members \$189.00 – priority registration until Nov. 1st

Your membership must be current for the ride dates.

Non-Members \$219.00

(All prices include GST)

To register contact mras.equine@gmail.com

RANCH RIDING at MRAS

Back for another season December 2024 to April 2025

Sundays: December 1, 15 & 29

11 am to 1pm or 1:30 to 3:30 pm

This is a fantastic way to work on your equitation skills and have fun in a relaxed environment with other riders. The goal is to ride a pattern with ease at the end of the day. The patterns may include some Obstacles. It is best if the horse you are bringing has good guide at all gaits, can back up, stop on command, move off your leg, rider can lope with confidence (at minimum trot) and the horse is ok in a group of horses.

Any questions and to register contact lynnbrunton@gmail.com, 403-651-4301. Once you have registered payment instructions will be sent to you. Payment received then confirms your spot. This is a non-refundable program. Maximum 10 riders.

MRAS Riding Members \$22 per ride - priority registration until Nov 1/24

Your membership must be current for the ride dates.

Non-Riding Members \$32 per ride

2025 dates are coming soon.

JUNIOR RODEO

Friday evenings: November through April

First Night of Series scheduled for: November 29th

The MRAS Junior Rodeo Series is a 10-night series of gymkhana and rodeo events offered to junior riders throughout the winter months. This series brings all levels of riders together ages 2-17 to participate in 4 events (barrels, poles, Thread the Needle and a Wildcard).

Full information about the series can be found [here](#).
Registration open to MRAS 2024/25 riding members -
registration form [here](#)

Jr. Rodeo information package and registration form can also
be found on the MRAS website at
www.millarvillercetrack.com under Equine --> Upcoming
Events

Questions about the series can be directed to
JRodeo@mras-track.com



HOLIDAY SEASON – OBSTACLES PRACTICE

Date: To be determined

**Once the date has been
confirmed, more information
will be posted on the Equine
page.**



Clinic and Lesson Series Cancellation Policy

MRAS cannot guarantee your spot will be filled in the event of cancellation however every attempt will be made to do so. Should your spot be filled, a refund will be issued less a 15% administration fee. If your spot cannot be filled the full amount will be forfeited.

Substitutions may be allowed; the Clinic Coordinator must be consulted and approve the substitution. MRAS will have no part in facilitating payments from a substitute.



EQUINE MEMBERSHIPS

2024 - 25 MEMBERSHIP PLANS

ANNUAL*

NOVEMBER - OCTOBER

FAMILY \$475

(ADDITIONAL DEPENDENT \$70)

INDIVIDUAL \$325

All year access to
Indoor Riding
Arena and
Seasonal Outdoor
Rings

NEW!

SEASONAL*

NOV- APR OR MAY- OCT

FAMILY \$350

(ADDITIONAL DEPENDENT \$50)

INDIVIDUAL \$225

Choose a 6
month plan for
your Seasonal
Riding needs.

QUARTERLY*

NOV - JAN; FEB-APR;
MAY-JUL; AUG-OCT

FAMILY \$200

(ADDITIONAL DEPENDENT \$30)

INDIVIDUAL \$150

Try out our
Riding facilities
with a 3 month
plan!

* All Equine membership plans
require a General MRAS membership

403-931-3411

WWW.MILLARVILLERACETRACK.COM

2024-2025 MRAS GENERAL MEMBERSHIPS



New Lower Rates!

FAMILY \$50

INDIVIDUAL \$40

SENIOR \$30

STUDENT \$30

BENEFITS OF YOUR MEMBERSHIP:

- Free Admission to *MRAS Hosted Events*
- Access to our indoor arena and seasonal outdoor riding facilities with the purchase of a riding membership
- Event committee participation
- Connection with neighbours, friends and our community



Purchase/Renew your Membership HERE OR

GO TO:

<https://www.millarvilleracetrack.com/membership/>

****MEMBERSHIP YEAR: NOV. 2024 -
OCTOBER 2025**



MILLARVILLE HISTORICAL SOCIETY

JOHN WARE RECLAIMED

Written by Eugene Blakley - Vice President of Millarville Historical Society

I was privileged to be invited to an evening at the SAM Centre in Calgary. This event was convened to understand a little more about the life and times of John Ware a Black rancher of the Millarville area. The event came about from a collaboration between Cheryl Foggo, author of John Ware Reclaimed, and Lindsay Amundsen-Meyer, archeologist at University of Calgary.

The evening started off with Cheryl giving us an idea how and why John Ware Reclaimed came into being. Growing up a Black child she felt loneliness as she could not see anyone on television or in print that looked like her. Searching for a mentor or hero that looked like her eventually lead her to finding the story of John Ware. This led to her association with the Ware children and later Lindsay Amundsen-Meyer which led to a meeting with Pat and Steve Fisher, whose property was John Ware's homestead. They gave permission for an archaeological dig to take place this last summer. The information below will give you the salient facts that they started with.

JOHN WARE 1845 - 1905

This is some information that came my way from Steve Fisher and Cheryl Foggo, who produced the JW documentary. This is John Ware's house in Millarville and has the following points:

1. One child at time of application for settlement
2. Came to Canada from the United States in 1882
3. Born in the United States with the desire to become a British subject
4. Claims: SW26-20-4-W5 also NW23-20-4-W5
5. Improved upon buildings and cropping in 1888 and went into permanent residence in 1888.
6. Never away more than two months when at Quorn Ranch
7. Has cropped 1-1/2 acres every two years (most likely a house garden)
8. Home - frame 18' x 24' and valued at \$500.00
9. Other buildings 20' x 20' stable and 18' x 20' barn
10. Fencing with a combined value of \$1500.00
11. 2/3 mile of 2-foot ditching and 1-1/2 mile with 1 foot ditching for irrigation
12. Has 12 horses and 150 cattle

John Ware was a famous Sheep Creek settler and there has been an imaginative account in Grant MacEwan's "John Ware's Cow Country". His nickname "N***** John" appeared to have been used quite unselfconsciously by Mr. Ware's contemporaries and as such was the universal respect in which he was held, in no derogatory sense. Changing times have renamed the Ridge that has his name.

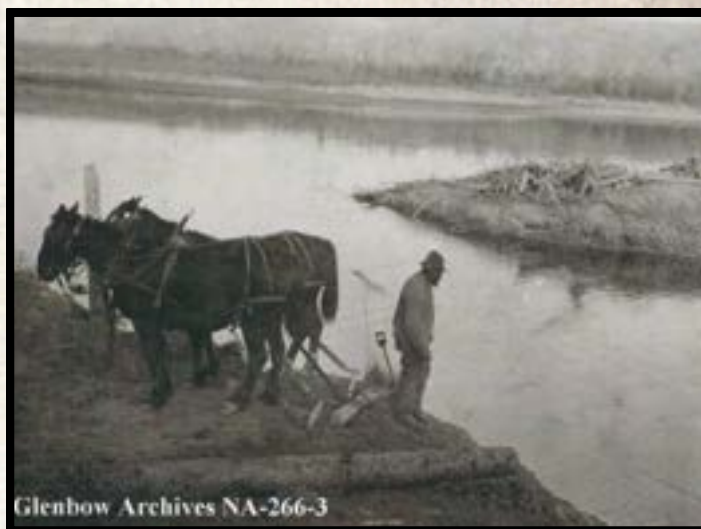
Born into slavery in South Carolina, he eventually came to Alberta from Ft. Worth Texas, driving cattle to Montana's Judith Basin around 1879 and in 1882. In 1882 he helped Tom Lynch to drive cattle for Fred Stimson to the Highwood. He and friend Bill Moodie worked for Fred Stimson at the Bar U, and others. He then applied for a homestead near today's High River where he started to build a cabin. Then in 1885 he served with Stimson's Rangers (I can find no reference other than this to the Rangers). In 1885 he registered his brand 9999 on left rib. Times seem to be irrelevant as some show the 1888 and others 1890 his building on above land. He and Sam Howe observed oil coming up from the ground at what is Turner Valley as early as 1885.

In 1892 he married Mildred JH. Lewis at the Baptist Church in Calgary. Mildred had come from Toronto to Sheppard with her parents Mr. and Mrs. Dan V. Lewis.

In cooperation with John Quirk, who helped build the house, then began to irrigate hay land. In 1887, H. Church contracted the haying. The permit was applied for in 1896, but he began the diversion in 1892. We wrote about this dam before, and it irrigated 107 acres of land.

In December 1887 he bought a herd of cattle from Daniel Courtney and bought the brand DC on the left rib and this brand was registered with his daughter Nettie's name.

In 1902 he sold his Kew holdings to Eugene E. Carey and moved to the prairie near the Red Deer River. He claimed the hills were getting too full of people and he needed more room. At the time of his death in 1905 he had 1000 head of cattle and 100 horses. He was buried at the Union Cemetery in Calgary. Mrs. Ware had predeceased him in the same year, of typhoid and pneumonia at the Holy Cross Hospital in Calgary. Their children were brought up by their grandmother, Mrs. Lewis of Blairmore. The two daughters later lived with uncle, Spencer Lewis of Vulcan.



John Ware - Red Deer River

There were six children, Nettie b. 1893, Robert b. November 29, 1894, William and Mildred b. September 20 1898, Arthur born July 4, 1900, and Daniel b. November 1902.

Lindsay went on to explain that knowing the legal land description could lead to a 1921 aerial photo that depicted four possible buildings that were on the property at that time. Once they were on scene, they realized that no buildings or evidence of those buildings were visible. Fortunately, there had been a picture taken when John and his family were there, and it showed the house, outhouse, and fencing. Also, it showed a possible location using the photo as a tool. From the aerial photo and information from Steve Fisher they could find and still see the original hand dug irrigation canal and where able to pull up his application for said canal. Steve also was able to add that a Y was taken off the original canal and from verbal records was to be ran under a structure that held milk, egg, etc. to keep them cool. Also to the west of this Y was a depression that had a tree growing out of it and that gave Lindsay hope that it was a hand dug cellar under the house. With the facts gleaned by Cheryl and the evidence given by Steve along with aerial photos, maps, and irrigation application it was decided to sponsor an archaeological dig. I was in attendance for some of the activity and there were large drones, lidar applications, and ground penetrating radar.

Not to mention the many volunteers and students that came for the three-day event. Cheryl was there digging and screening target areas for evidence of Ware's presence. From their work, they found square head nails that were pre first world war variety along with post war types. A horseshoe in the area where there was possibly a barn and corrals along with more nails. Lidar showed several areas that seemed more densely packed than others, thus could have been corrals or buildings sites. Attention was given to the depression that showed a possible cellar and from that more fragments were gained by digging and screening. One of these was a button cover from the era of Ware and was possibly Mildred's and glass whose glaze was consistent with the times. In the final hours Steve Fisher found pieces of painted crockery and an original Keen's mustard lid.

To the average eye these findings seem to be small but these lead archaeologists to be able to come to conclusions that hopefully will lead to further excavation of the site and with it give us a better idea of what John and Mildred's lives were like.

I am sure that I am not giving a great representation of the evening. My wife Karen and I came away with a new awareness of this piece of land that I have been on many times. Also, it reminded me of the visits that Nettie had with my mother and aunt Jane Fisher over the years and the stories that came from those visits. So, thank you to Cheryl and Lindsay for a great evening that seemed to pass too quickly. We at the Millarville Historical Society hold the stories of Ware's and the other original pioneers. Our goal, which seems to be in concert with Cheryl and Linsay's, is to put these histories not only on paper but up in the cloud for future generations to find their place much like Cheryl searching for identity.



Dr. Grant MacEwan at dedication of John Ware Memorial at site of Ware ranch at Kew. Photo courtesy Michael Burn.

Read more historical articles on [Facebook - Millarville Historical Society](#) or email us millarvillehistoricalsociety@gmail.com if you have photos, information, or questions.



2024 OUTSTANDING EXHIBITOR/CONTRIBUTOR AWARD Carol Papworth NOMINATION

The Outstanding Exhibitor Contributor Sub-Committee selected Carol Papworth as the most outstanding fair contributor nominee for 2024.

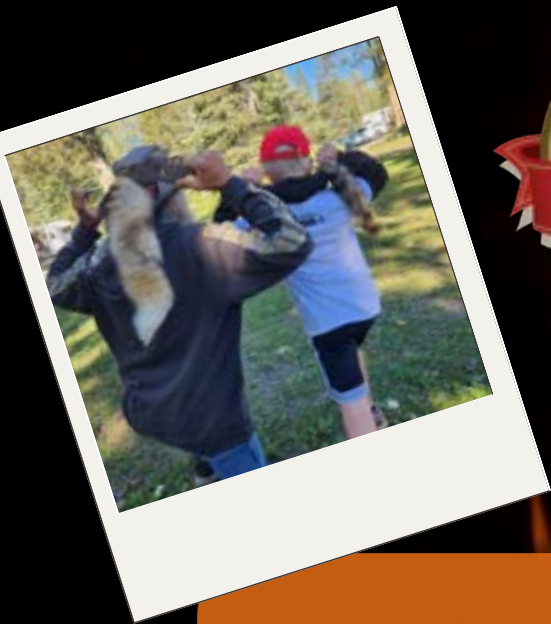
"I recommend Carol Papworth be considered by the nominating committee for this award for 2024. She has supported the Priddis & Millarville Fair for many years as a volunteer and photography historian. Don't be fooled by Carol's quiet demeanour. She is a tireless volunteer who can be counted on regardless of the task given to her. She's one of the first volunteers to arrive and the last to leave for any fair related activity that she is participating in. She is one of a small core group of volunteers who take on numerous miscellaneous tasks throughout the year such as organizing the Fair storage room, counting ribbons, Fair setup and take down, preparing volunteer meals to name just a few.



Because of her low-key nature, few know how much effort, time and energy she contributes to the success of the Fair. Putting her photography skills to work, she has produced thousands of photos over many years of all aspects of the fair. She and her camera are at committee meetings, preparatory work bees, and of course all throughout the MRAS grounds during Fair weekend. Her work is featured in numerous Fair books, on the MRAS website. For many years, Carol has captured the essence of the Fair in treasured photo books. Her initiative to do this ensures the legacy of the Fair is never forgotten. Carol is a worthy candidate for the Outstanding Exhibitor Contributor Award for 2024." Submitted by Suzanne Sills
Carol's nomination was carried unanimously at the June 2024 Fair Committee Meeting.



Thank you Carol for all of your contributions to the Fair!!



The 2024 Millarville Campground season is a wrap for another year! The MRAS Campground Committee would like to thank you for choosing our 'little hidden gem' as your camping destination. We look forward to welcoming you back starting May 16, 2025.

The Campspot reservation system opens March 1, so mark your calendars.

See you in May!
The MRAS Campground Committee



HALLOWEEN HOWL SUMMARY

Thank you to all who volunteered and attended Halloween Howl 2024!
We had 333 people through the doors this year.

The same organizing team was back for more fun too. It is now our 3rd year being involved in this event, so Leanna, Monika, and myself are starting to get the hang of this! We also had a return of many others to help with haunted house set up and take down – along with volunteers for upstairs decorating and table set up.

We had a new addition this year – “The Photo Shop of Horrors”. This is a tradition that used to be offered up North in Leduc, AB by an award winning photographer Amie Bell. She moved with her family just over a year ago, so they enjoyed taking in our 60+ year Millarville Halloween tradition. Everyone seemed to really enjoy this photo booth area for family and friend pics - and the backdrop looked fantastic!

There were 28 pumpkin entries in the pumpkin carving contest and Cochrane watercolor artist and owner of Blue Pine Arts, Trupti Karjinni was the pumpkin judge this year. Jason Parker took on the Emcee role again, while our favorite bartender, Leanna Bridgeman, raised \$1,700 in bar sales. As always, we had great support from the MRAS team including Melonie McKee and maintenance manager, Craig Howe.

Again, thank you for the hot buttered popcorn made by Jason and his daughter, Jinjer – this is their 3rd year doing this! The potluck was a hit and we also collected several boxes of food for the local food bank!

The ever-popular haunted house in the basement was at its creative best this year. There was quite a variety of themes -a scene from The Ring, a vampire lair, creepy clowns, zombies, insane asylum, a witches coven, a scene from Beetlejuice, slasher monsters playing poker, a medieval dungeon, a scene from the movie “Jeepers Creepers”, and a very scary nun in the catholic cemetery! We had several dedicated people who spent 3 days building walls and creating this haunted house so it can be viewed for a mere 90 minutes. (Then we tear the whole thing down in 3 hours on Sunday morning – crazy!). This year was the best turn out for helping with the haunted house! Thank you all so much! We are thinking for next year, that we run two shifts so we can keep a steady flow of help throughout the Wed night wall set up. We hope we can keep adding new families of older kids (ages 12 and up) next year. Of course, we love it when all the past families return to create amazing spaces and deliver more scares!

Lastly, we want to thank all the kids and parents who volunteered for shifts on the Howl night. It is great to have so much support! One final shout out goes to Kari Saler and Jennifer Singer. These two showed up again to help decorate the upstairs and do table and chair set up for the second year. It allowed Leanna and Kristen to get all the shopping and booze runs done on Friday afternoon! They were also our “go to” ladies on the night of the Howl for any last minute things that popped up (like hunting down a bottle of Benadryl!) All turned out great and everyone had a fun and safe evening!

Thanks again! Till next year!

Kristen Parker, Leanna Bridgeman & Monika Lokietko



HALLOWEEN HOWL 2024



Nov 7th - 10th

and

**Nov 14th - 17th
2024**

**make it,
bake it,
grow it!**

300+ VENDORS

**PRE - PURCHASE TICKETS
ONLINE IN ADVANCE**



**MILLARVILLE
CHRISTMAS
MARKET**

**THURSDAY
9am - 5pm**

**FRIDAY & SATURDAY
9am - 6pm**

**SUNDAY
9am - 5pm**

Tickets
\$7.50
12 & UNDER FREE

MEMBERS!
Get your free
tickets online.
*No guarantees
at the gate.

millarvilleracetrack.com  

Volunteer With Us!

The countdown is on to our Christmas Market! We still have a few spots to fill including:

- Set-up/Tear down
- Parking Attendants
- Gate Greeters

Benefits

- ✓ Free lunch
- ✓ Free entry to Christmas Market
- ✓ Volunteer parking pass
- ✓ Great people, great experience!

JOIN THE MAGIC!

SIGN UP HERE!



THE Kids Only Shoppe at the Millarville Christmas Market

The year long effort of so many crafting elves has resulted in over **6000** gifts for our young shoppers to choose from. Mrs Claus and her mighty band of elves are ready to greet all children ages 5 to 12 during the weekend days of the Christmas Market - November 9, 10, 16 and 17. Please note that the Shoppe is **NOT** open on Thursday or Friday.

For anyone new to the KOS, children can shop with the assistance of an elf (a KOS volunteer) for the perfect gift(s) for family members. Gifts are wrapped and tagged so their choices are a surprise for the lucky recipient. All gifts are \$15 or less and there is something for every budget. The Shoppe is located in the Picnic Shelter and Mrs Claus will be out front to greet all visitors. Parents are welcome to stay warm by the fire and/or sit at the picnic tables while they wait. Cash, debit or credit cards are accepted.

The KOS produces a monthly newsletter for the benefit of the elves and the November edition is **HERE**.
New volunteers are always welcome.



GARDENING UNDER THE ARCH

<http://millarvillehortclub.com>

Meetings are held on the second Tuesday of the month, September to May, at 7:00 p.m. The meetings are held at the Millarville Anglican Church House on Hwy 549.

Thank you to Lorraine Cathro who chaired the October meeting. Thank you also to Renee Miller for her presentation on dehydrated foods from the garden and to Cheryl Greisinger for sharing her knowledge on fall planted garlic.

Tuesday November 12 is the next meeting .

This is our Annual General Meeting . This a great opportunity to hear all the important work our club does throughout the year. As well as the chance to give your great ideas for future meetings.

The roles of Vice President and Secretary-Treasurer are both up for renewal this year. Both Lorraine and Brenda will be travelling extensively in the New Year and would like someone else to step up. If you would consider either of these roles, please call Louise at (587) 834-1885.

If you are interested in attending any of our presentations, please contact Louise Patterson Bruns (our new President) at louispattersonbruns@gmail.com or at millarvillehorticulturalclub@gmail.com . Whether you are a novice or expert in landscaping or gardening, join our club; \$15/year for singles or \$20/year for a family. Check us out on [Facebook](#) as well .

Our December 10 meeting will be our Christmas potluck dinner , starting at 6:30 pm. Bring your favorites. Everyone looks forward to this delectable event.

MILLARVILLE COMMUNITY LIBRARY

Did you know?

The library has received about 100 new books in the last month. A big mix of children's, junior, adult fiction and nonfiction have arrived and are waiting to be read! Amongst the new books available are authors John Grisham, JD Robb, Daniel Silva and Peter May. There are a number of Christmas books on the way as well.

Classes

Although we are offering no classes at the present time, if you are interested in starting a new hobby there are books on knitting, quilting, fermenting, gardening, blacksmithing, painting, woodworking, cooking, and animal husbandry.

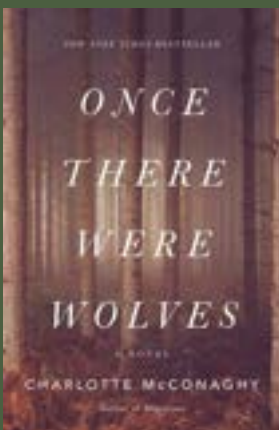
Bouquets

A big thank you to Robert McWilliam for the donation of his books to our collection. Robert is a local author of both children's and adult fiction. His genre is "What if". Watch for him to do an author talk in the new year. Thank you to the new volunteers who have been helping in our library.

Would you?

Consider using our library space, at no cost, for groups or individuals to meet or hold at class? Contact the library to see if the space would work for you.

Need a read?



"Once There was Wolves" by Charlotte McConaghy is a beautifully written book about humans' effect on nature and each other. - Foster Wozniak, Millarville





**VOLUNTEERS
NEEDED**



**CASINO
BLACKFOOT**

We are doing a fundraiser
March 4 & 5, 2025 in conjunction
with the Ace Casino Blackfoot!
We need volunteers for a variety of
positions and shifts.

Sign up [HERE](#)





Buy & Sell MarketPlace

Family friendly gelding Quarter Horse Sought

We are looking for an all-round quarter horse for our family, ideally in the 15hh range and aged 7-10 years. We trail ride and do some Western pleasure. Must be child friendly, good to shoe, load and with no history of founder.

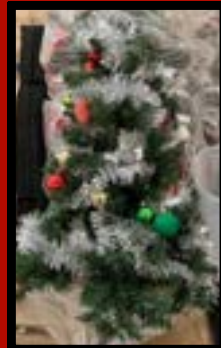
Please contact Anna
403-461-7400



FREE TO GOOD HOME!

Various Christmas
Decorations and
Ornaments

Contact office for pickup:
office@mras-track.com



Discover
great deals
now

BUY

Find amazing
bargains for
your needs
today

SELL

Sell your items
quickly and easily
with our
classifieds

CONNECT

Connect with
100's of buyers
and sellers in
your local
community

For more info and/or to submit your classified ad to office@mras-track.com. Please include a clear, well-lit photo, brief description, price and your contact information. No businesses. All ads subject to approval by MRAS.

**Deadline is the 19th of the month for the following month's
Track Watch publication.**

Thank you to our Sponsors

(click logo to go to website)



LIMITED QUANTITY

MRAS proudly presents our very own Signature Sauces



**GET IT BEFORE IT'S ALL GONE!
\$15/ JAR
AVAILABLE AT THE OFFICE**

Advertise with us!



You could be reaching thousands of readers by putting an ad in our monthly Track Watch newsletter!

For more info and monthly rates email: office@mras-track.com